



cmsasiapacific.com

Supporting the world's major
construction and mining companies to
build the infrastructure **of the future.**



About Us

CMS Asia Pacific is proudly Australian-owned by Stephen Brownell, who started his career working as a mechanical tradesman, with his experience spanning heavy industry through to underground mining in NSW and QLD. Steve has built his business on trust, honesty and integrity while always striving to be at the forefront of industry revolution and innovation.

Over the past two decades CMS has developed an enviable reputation for excellence with a footprint that now reaches globally. The business has international business partners in New Zealand, North America, Indonesia, South Africa, India, South America and Eastern Europe who provide innovative solutions through goods, services and professional development to our manufacturing base in the Newcastle region.

Why Choose Us

- One partner, end-to-end delivery across civil, mining, workshop, power and training reducing interfaces, risk and downtime.
- ISO 9001 accredited quality system (Certificate No. QEC13160) for consistent, repeatable and auditable outcomes.
- Compliance you can rely on with Recognised Service Facility MLA073367 and ANZEx SF21117 approvals supporting hazardous area obligations.
- RTO 90854 (CMS Asia Pacific Power) delivering EEHA training aligned to AS/NZS 3800 - AS/NZS 60079, strengthening site competency and audit readiness.
- Specialist flameproof and inspection services including flameproof enclosure design and certification support, document audits, diesel code compliance and C1 inspections for surface, underground fixed and mobile equipment.
- Comprehensive workshop supported with new manufacture, overhaul and service exchange for diesel electrical components (including alternators) to accelerate turnaround times.
- Experience on critical assets (road headers, continuous miners, feeder breakers, shuttle cars, DCB's, QDS equipment, fans pumps, electrical supply and installation).
- Track record on major projects and demanding environments, trusted by workmanship, reliability and "get-it-done" performance when schedules matter.

Supporting Our Community

Our mission is to create lasting, positive impact, not only through the projects we deliver, but through the way we support people and communities. We are committed to improving outcomes for our employees, our clients, and the families who support them, and we recognise that this responsibility extends beyond the workplace.

To bring this commitment to life, the CMS Asia Pacific Community Benefit Program provides annual grants and donations of up to \$5,000 AUD to support initiatives, activities and organisations that make a measurable difference in people's lives.

This includes support for the Westpac Rescue Helicopter Service, the Royal Flying Doctor Service, UNICEF and Type 1 Diabetes research organisation through JDFR Australia.



Civil

Specialising in civil construction, infrastructure development with project and fleet management.

CMS is a proven leader in tunnelling and civil infrastructure support, supplying purposebuilt machinery—including overhaul, service of drill rigs, hire of Mitsui S200 and S300.Roadheaders backed by experienced technical specialists as well as electrical infrastructure supply and installation. We provide reliable, responsive support for excavation and tunnelling programs to help reduce downtime and keep projects on schedule.

Our capability is proven on major civil developments including WestConnex (Sydney), Sydney Metro, Melbourne Metro, Cross River Rail (Brisbane), and City Rail Link (Auckland), delivering the equipment and expertise required for complex, large-scale works.

Our Services:

- Equipment Hire
 - Equipment Repairs
 - Breakdown Support
 - Labour Hire
 - Supply and Install of Electrical Infrastructure
 - Contract Works
-

Our Civil clients include:

CPB Contractors, John Holland, UGL, Abergeldie, Acciona, Gamuda, Webuild, Ghella, Theiss, Sydney METRO and Melbourne METRO





Mining

Leaders in mining operations, safety, compliance and environmental management.

CMS brings more than 20 years' experience delivering surface and underground mining solutions across Australia and the Asia Pacific.

Our Mining Division offers equipment hire, backed by proven repair capability, project management expertise, specialist training, and skilled labour resources helping our industry partners maximise uptime and performance.

We combine advanced technology with experienced personnel to provide reliable, high-quality support that meets the demands of modern mining operations.

Our Services:

- Equipment Hire
- Engineering and Design
- Equipment Repairs
- Project Management
- Labour Hire
- Contract Works

Our Mining clients include:

Glencore, Anglo American, Centennial Coal, Peabody, Yancoal, BHP, Fitzroy Australia, South 32/GM3.



Workshop

ISO 9001 certified and a recognized service facility, MLA073367 our accredited workshop specialises in servicing surface and underground mining equipment requiring flameproof electrical systems.

NPG Mining / CMS Asia Pacific provide end-to-end workshop support for underground fleets, combining practical repair expertise with engineered compliance and lifecycle capability to keep critical assets safe, available and audit ready.

Our workshop team services, repairs, and overhauls a wide range of machinery including roadheaders, continuous miners, feeder breakers, shuttle cars, excavators, DCB's, substations, and QDS equipment as well as auxiliary infrastructure such as fans and pumps along with service exchange for diesel electrical components including alternators.

As part of our compliance-led approach, CMS also provides engineering design and approval of flameproof enclosures, flameproof document audits for mobile and fixed equipment, code inspections for diesel machines including CI inspections (surface and underground).

Our Services:

- Audits / Inspections
- Engineering and Design
- Equipment Repairs
- Service Exchange
- Welding and Fabrication
- Hydraulic and Gearboxes

Our workshop clients include:

Glencore, Anglo American, Centennial Coal, Peabody, Yancoal, BHP, Fitzroy Australia, South 32/GM3.

Power

Experts in flameproof electrical services, manufacture and overhauls of electrical switchboards, underground and open-cut mining equipment

CMS Asia Pacific Power delivers flameproof and hazardous-area electrical solutions for underground and open-cut mining, specialising in the design, manufacture, overhaul and repair of electrical switchboards and mining equipment.

Established in 2024 following the acquisition of NPG Mining (24 years' proven performance), CMS provides expertise across flameproof and non-flameproof IP-rated equipment and intrinsically safe control and monitoring panels. We also manufacture, service and repair Powertrams and Flitmates transportable generator systems for underground coal operations supporting up to 3.3 kV high-voltage requirements to improve uptime, safety and compliance.

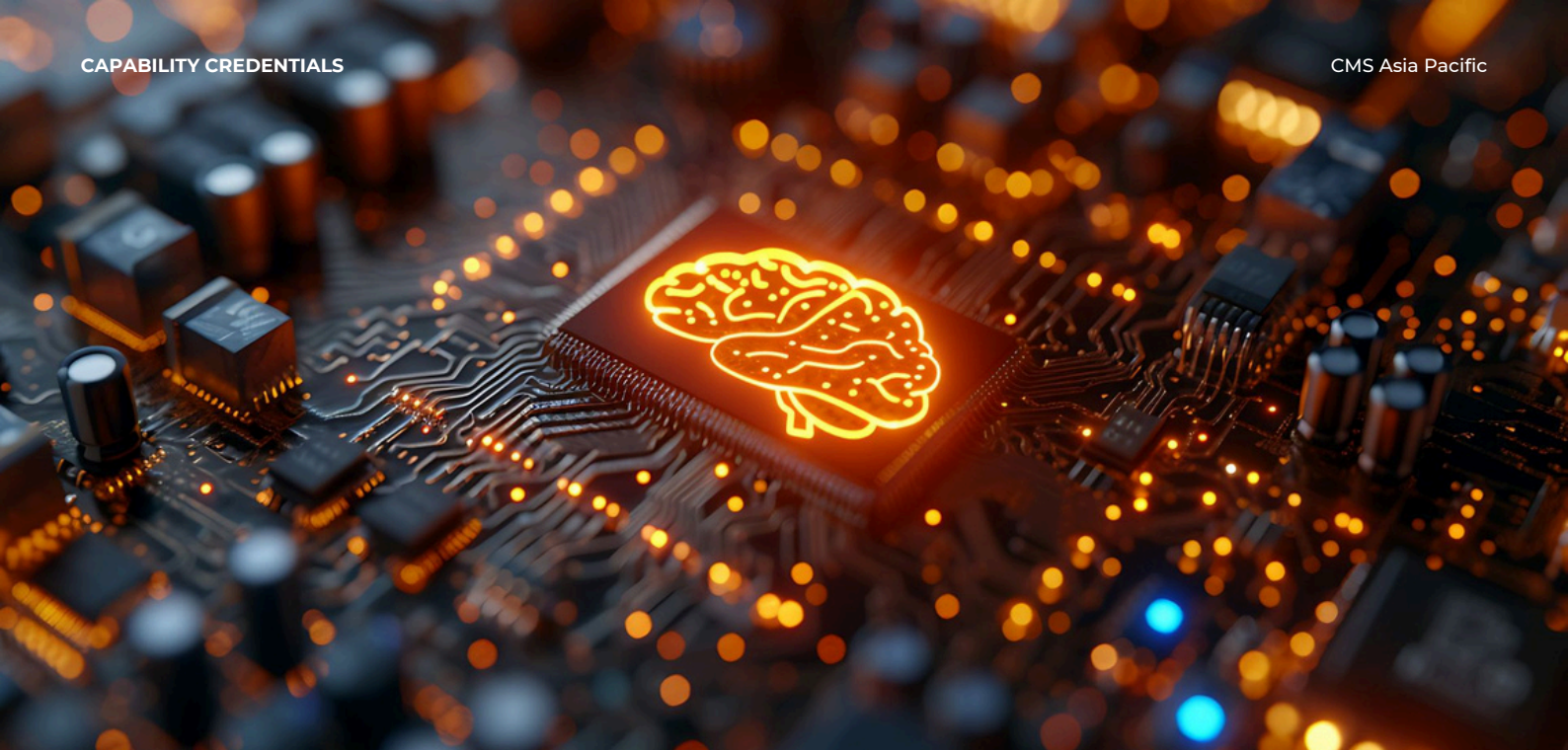
Our Services:

- Engineering and Design
- Workshop Services
- Field Services
- Electrical supply and installation

Our Power clients include:

BMA, Centennial Coal, South 32/GM3, Peabody Energy, Yancoal, Ulan Coal, DELTA Coal, Cement Australia, Abergeldie Group, SANDVIK, AMP Control, Cougar Group, Bloomfield Group, BIS, ALFABS, PBE Technologies, Cram Fluid Power, Solitech.





Training

Delivering Australia-wide training and accredited certification to support compliance across a wide range of industries

CMSCMS delivers Australia-wide hazardous area electrical (EEHA) training and assessment to build and maintain compliant capability across mining, industrial and energy environments. Our nationally recognised Certificate IV in Hazardous Areas Electrical (UEE42620) is delivered by experienced industry trainers retaining competencies in Certificate IV in Training & Assessment TAE 40122 – 40166 and supported by practical, job-relevant assessment aligned to the intent and requirements of AS/NZS 3800 – AS/NZS 60079 series for explosive atmospheres. Training is available onsite or through scheduled in-house programs to minimise operational downtime, with a strong focus on safe work practices, inspection, documentation and evidence-based competency. CMS operates under an ISO 9001 quality management system, holds ANZEx SF21117 and MLA073367 approvals including a Registered Training Organisation (RTO 90854), providing clients with confidence that outcomes are consistent, auditable and aligned to site compliance obligations.

Our Services:

- Onsite Training
- Inhouse Training
- Security Instrumentation
- Workshop Training and Assessment

Our Mining clients include:

Glencore, Anglo American, Centennial Coal, Peabody, Yancoal, BHP, Fitzroy Australia, South 32/GM3.



Our Proud History

Formation of Coal Mine Services Pty Ltd

2006

Expansion of Coal Mine Services into Queensland

2017

Formation of Civil Mine Services NZ incorporated

2024

2005

Formation of labour hire division for trades and operators to NSW mining projects

2009

Formation of Civil Mine Services Pty Ltd to work with the Civil Infrastructure market

2019

Purchase of NPG Mining, formation of CMS Asia Pacific and establishment of global business network

We look forward to doing business with you. Please contact:



Steve Brownell

Founder and CEO

0437 872 026

02 4935 2500

steve.brownell@cmsapac.com